



American Marine Highways

Company Mission

- To deliver a safe, cost effective and reliable container on barge service.
- Reduce highway truck traffic by using waterway which supports green initiative.
- Offer flexible service options for handling and storage of containerized cargo.

Development Background

- USDOT Maritime Administration funded and Mississippi State DOT sponsored Project
- Project was advertised and SEACOR Holdings selected as the marine transportation and terminal operations service provider
- Grant parameter change was requested to fund terminal and surface transportation equipment rather than marine assets
- Alabama Freight Mobility Study was used to build cargo market of approximately 30,000 TEU as initial operational target by Alabama and Mississippi DOTs out of 190,000 containers within a 60 mile radius.
- Tariff structure developed using joint asset base between Mobile (APM Terminals), West Point (Tom Soya Grain), and Fulton (Itawamba)

Service Advantages

- The cargo market is within close proximity to the Ports.
- Reduced trucking rate.
- Ability to add freight to maximize container weight for shipment.
- Import / Export and empty container storage site.
- Barge slot agreement availability.
- Overall reduction of costs.
- On site chassis pool.
- Container depot to include container surveys, inspections and repair.
- Ability to mold and adapt to the cargo market quickly.
- Tax exemption for MS companies using MS ports. All port fees qualify.

Operational Concept & Schedule

Voyage

- US CBP will complete entry screen at Mobile prior to barge load
- 390 Mile Route
- Weekly Round Trip Schedule from Fulton & West Point to APM Terminals in Mobile, Alabama.
- 36 FEU per barge; 3 barge tows for 108 FEU per voyage
- Modular service with ability to add 3 additional barges per tow without losing speed.

Schedule:

- Fulton; prospective sailings every Thursday
- West Point; prospective sailings every Saturday
- Mobile; prospective sailings every Tuesday
- Schedule based on capturing the most cargo and can easily be adjusted as the market requires.
- Additional sailings to be added as the market requires.

Facility and Equipment



Facility and Equipment



American Marine Highways



Raymond D. Lucas Memorial Port

Mile marker 338.5 on the Tenn Tom Waterway.
Near West Point, MS

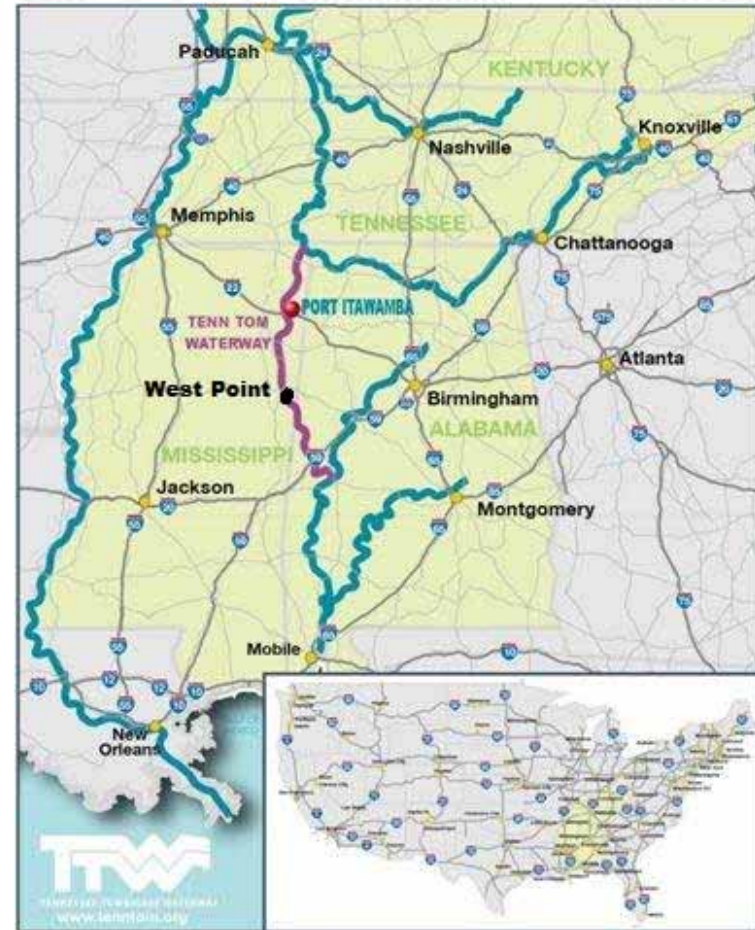
Facility:

- 555-foot parallel barge slip
- 10-barge stowage
- 6 mooring dolphins
- 60-foot drive-on steel bulkhead dock
- Crane cell for mobile crane
- 120-foot loading and off-loading crane dock
- Truck scales
- 20-acre staging area with crushed stone surface



Uses

- Container on Barge & Container Depot
- General freight transfer
- Freight includes coal, salt, lime, gypsum rock, stone, and fertilizer
- Container Trans Load and Back Loading



PORT OF ITAWAMBA

Mile marker 390 on the Tenn Tom Waterway
In Fulton MS

Facility:

- 71 total acres
- 15,000 sq ft of warehouse
- 1100 feet of berthing
- 60 Ton fixed bridge crane
- 2 x Taylor top loaders (950 & 955)
- Empty handler
- 154 chassis for lease
- Truck Scale



Distance from the port to:

Tupelo 22 miles	Mobile 355 miles
Memphis 110 Miles	Huntsville 253 Miles
Birmingham 116 Miles	Montgomery 204 Miles

Overview

Program Requirements	Performance Indicator	Performance Goal
One-way trips per year of 3 barges	2 Rotations of a 3 Barge convoy each week between Mobile and Itawamba	104
Containers per trip	Each Barge contains 36 containers by 3 Barges	108
Total number of containers transported per year	Calculation	11,232
Total number of containers transported full	Estimated at 60% of all Barges will be full	6,739
Total number of containers transported empty	Estimated at 40% of all Barges will be empty	4,493
Total weight of loaded containers	Calculation based on 25 tons per FCL	168,480
Total weight of empty containers	Calculations based on 4.5 tons per empty	20,218
Combined weight of all containers	Calculation	188,698
Miles traveled per year	Calculation based on a 390 mile trip between Port of Itawamba and Mobile	40,560
Annual ton miles diverted	Calculations based on rerouting of freight	73,592,064

Cargo Market

The following is a brief synopsis of the regional cargo market

- **Automotive :**

- Auto Assembly Plants
 - Toyota
 - Mercedes
 - Hyundai
 - Honda

- **Building Material:**

- GP
- Riverside Hardwoods
- Southern Yellow Pine

- **Furniture:**

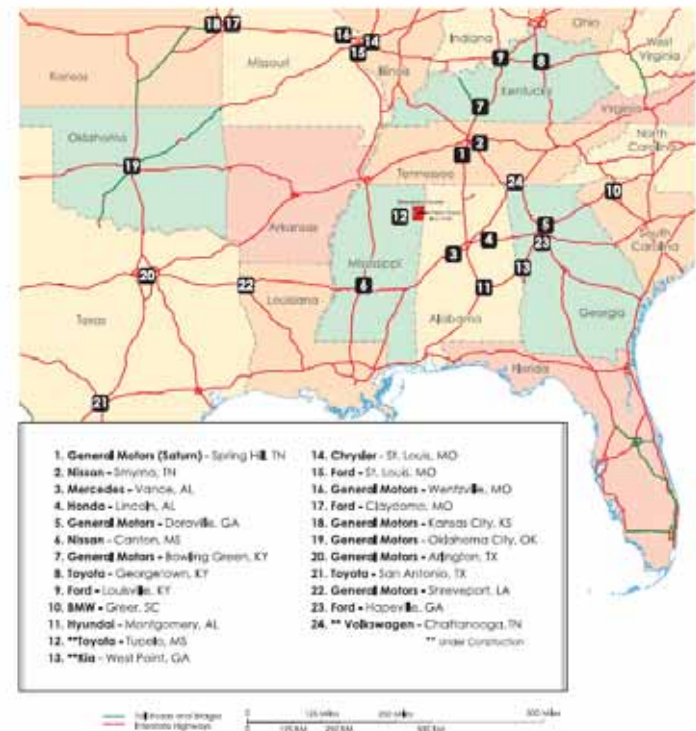
- 100 furniture plants are located within 60 miles of the port
 - Heritage Furniture
 - United Furniture
 - American Furniture
 - Corinthian Furniture

- **Other:**

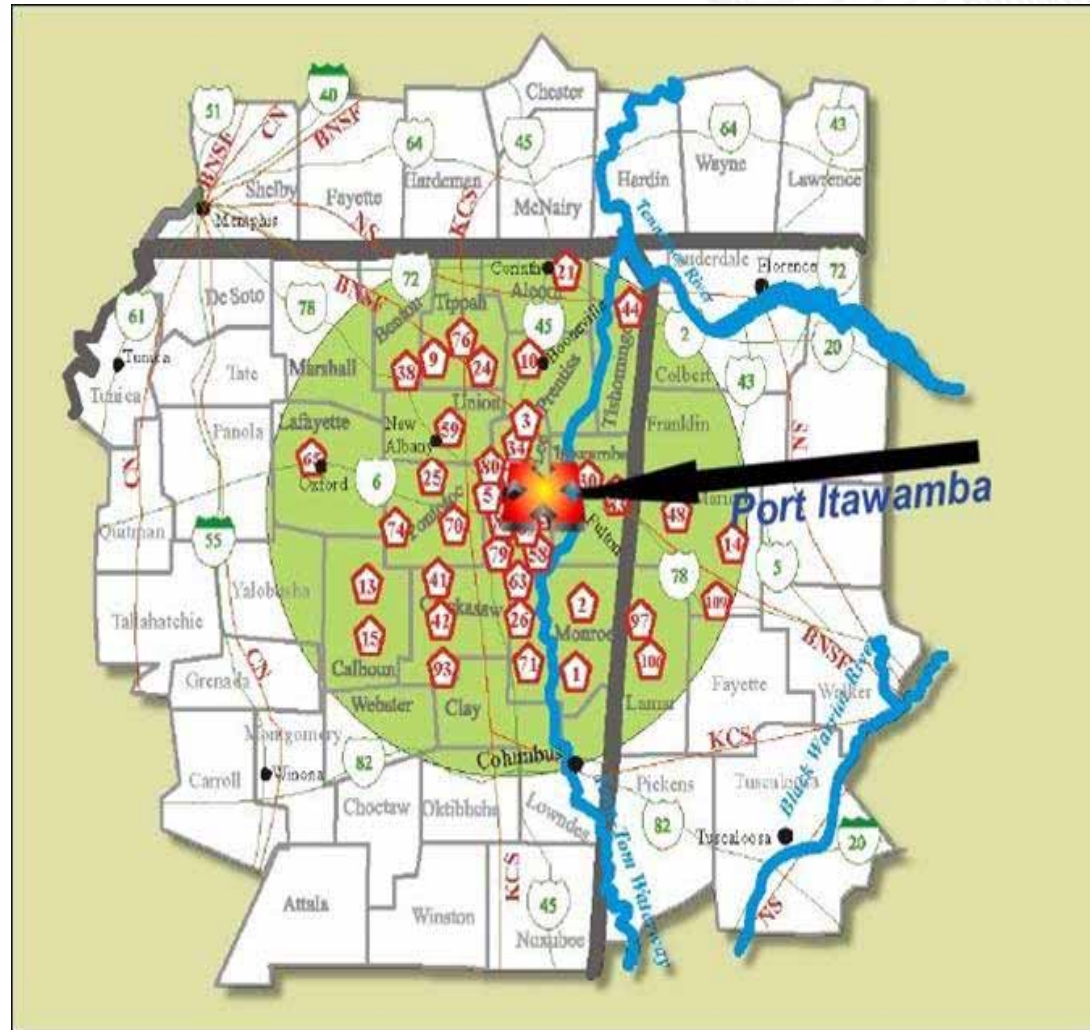
- Staple Cotton
- Memphis cotton
- Weyerhaeuser
- Tronox

- **New Business Markets:**

- 210,000 tons of sweet potatoes within 70 miles of the port
- 200,000 acres of cotton that produce 96,000 tons within 75 miles of the port



100 Furniture plants are located within 60 miles of the port



Examples of Current Intermodal Rates

Trucking Rates:

- Average trucking rate from Tupelo to Memphis: \$540
- Average trucking rate from Tupelo to Fulton: \$170
- Average trucking rate from West Point to Memphis: \$600
- Average trucking local rate in West Point < 25 miles: \$193

Rail Rates:

- SAV-MEM : \$1050
- LA- MEM : \$1774
- Charleston –MEM: \$1050
- JAX – MEM: \$1150 & \$1000 Export
- NOLA – MEM: \$700 & \$600 Export

Container on Barge Rate

Port of Clay:

Container on Barge Rate for 20': \$635

Container on Barge Rate for 40': \$735

Port of Itawamba:

Container on Barge Rate for 20': \$715

Container on Barge Rate for 40': \$825

* Above rates include river rate, lift fee and gate fee.