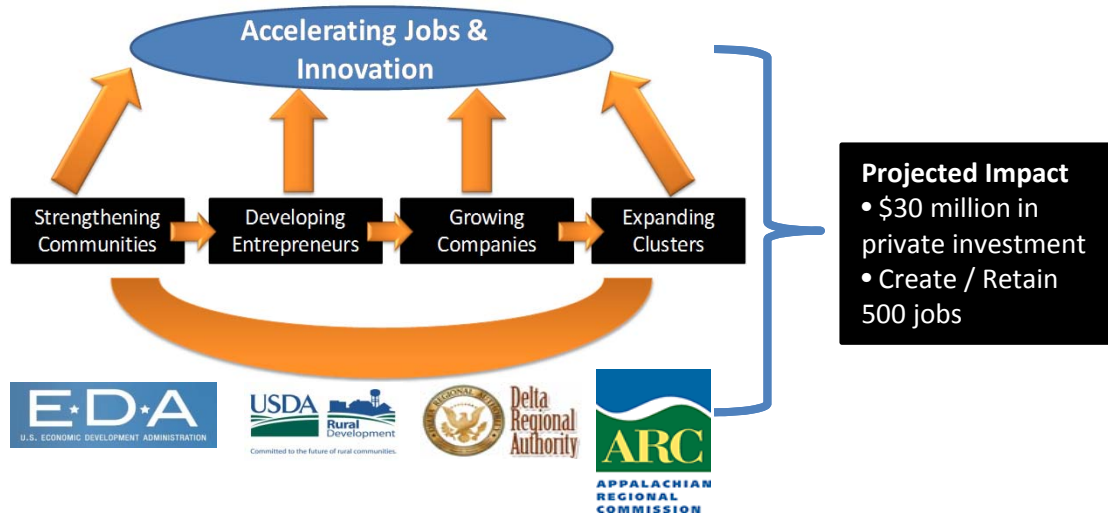


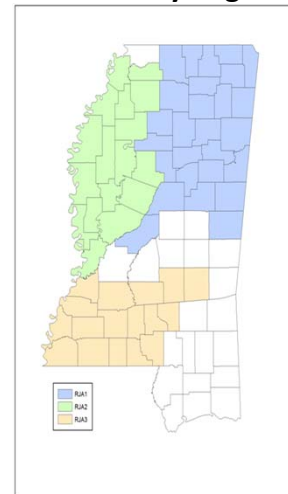


Accelerating Jobs and Innovation Through Community and Economic Development in Rural Mississippi



- **Funding Partners:** DOC-Economic Development Administration, USDA-Rural Development, Delta Regional Authority (DRA), Appalachian Regional Commission (ARC)
- **Federal Award:** \$1,065,000 (3 years)
- **Project Team**
 - MSU: CAVS-E, nSPARC, SRDC, OETT, FFI, SRDC, Agricultural Economics
 - Mississippi Development Authority (MDA); Innovate Mississippi
- **RJA Advisory Board**
 - Planning & Development Districts (Three Rivers, South Delta, Central Miss., South Miss., North Central), State Agencies (MDA, MDES), Regional Economic Development (CREATE, Community Development Foundation, Delta Council, Bolivar, Part Gibson, Natchez, Itawamba County) Private Sector (Nissan, Southern Motion, Jimmy Sanders, Inc., Butler Snow, Stone Adams), Community Colleges (State Community & Jr. College Board, ICC, EMCC, MDCC, Holmes CC), Utility Companies (Miss. Power, Entergy, EPA of Mississippi), Institutes of Higher Learning (MSU Extension Service, IHL, Delta State University, Alcorn State University); State-wide Associations (MAMA, MMA, Miss. Minority Business Alliance).

61 County Region



Mississippi State
UNIVERSITY